



# Carmarthenshire County Council

Swansea Bay City Deal Projects Update



# Life Science and Well-being development



An integrated project proposed for Llanelli

Proposed £40 million City Deal element will catalyse:

- The creation of 1,800 jobs
- A £467 million economic impact over 15 years

The City Deal elements of the project include:

- A business development centre providing incubation and acceleration facilities for research based business start-ups focussed on life sciences
- A well-being skills centre with facilities for education and training. This centre will feature a wide range of training opportunities from entry level through to postgraduate and continuing professional development. Where appropriate, training will be integrated with identified health board clinical services
- A clinical delivery centre with associated clinical research delivering a range of community focussed health and care

The background of the slide is an architectural rendering of a modern building complex. The buildings have a dark, metallic, corrugated facade. In the foreground, there is a body of water reflecting the sky and the buildings. The sky is a clear, light blue. The overall scene is bright and clear.

Full economic benefits for the site will be achieved through adjacency to:

Assisted living in a range of accommodation types, aimed at a wide range of need  
This will include a nursing home, extra care facilities and supported living accommodation

The aim is to promote independence, enhanced through the use of latest supported living technologies developed by specialist research and development companies based within the business centre

In addition, the assisted living facilities will also provide a test bed to assist business development and research

An aerial architectural rendering of a campus development project. The image shows several modern, multi-story buildings with flat roofs and large windows, arranged in a cluster. The buildings are surrounded by landscaped areas with trees and walkways. In the background, there are more buildings and a road. The overall scene is a detailed 3D model of a planned campus.

## Project development


Outline planning consent awarded in August, 2019  
RIBA stage 3 design work continuing  
Discussions on-going with academic partners

## Next steps

New branding being imminently launched  
Revised business case soon being submitted to Joint Committee for decision  
Expected procurement of principal contractor in coming months  
Start of main construction works on site later this year  
Completion of zone one in 2022



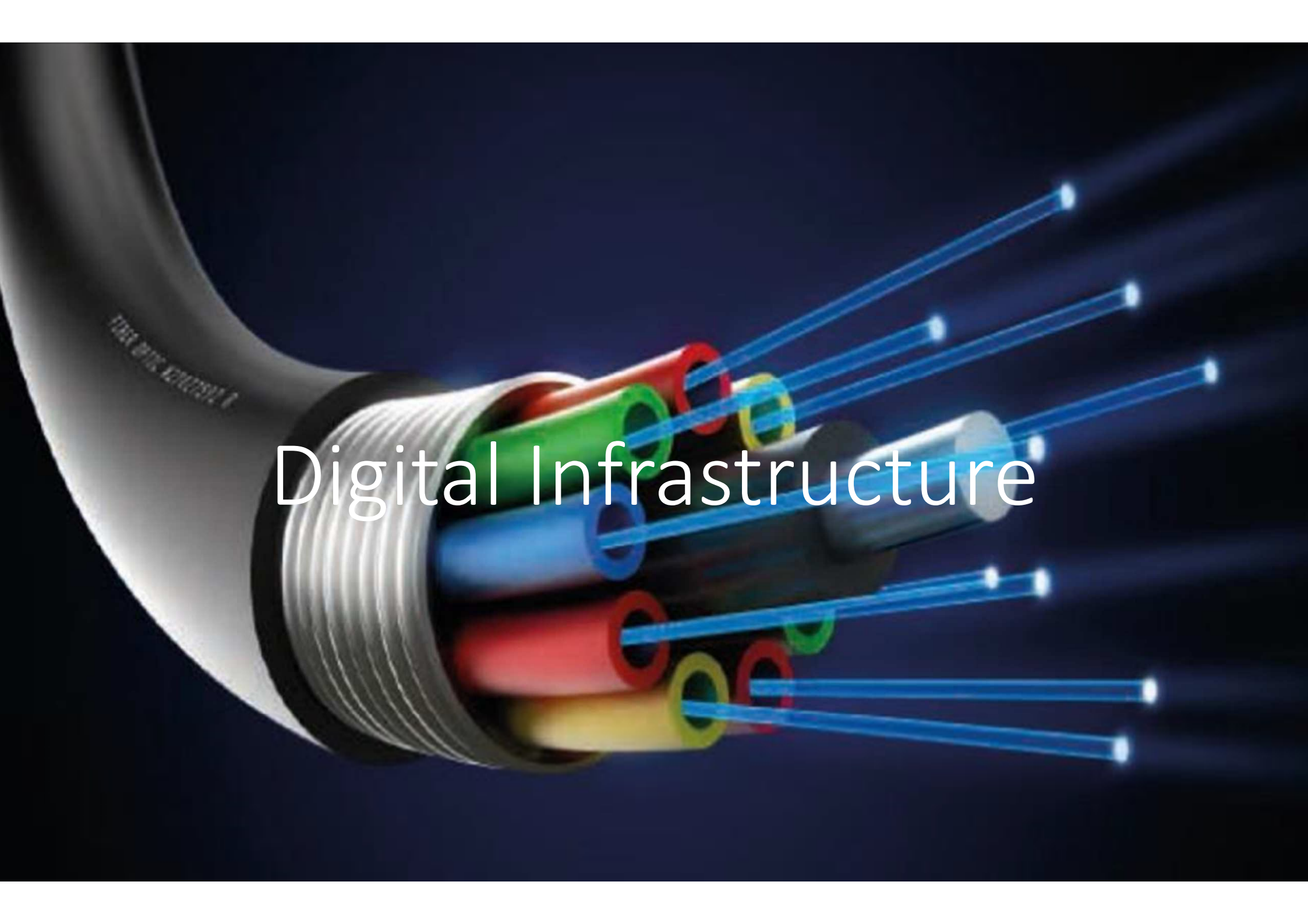
# Canolfan S4C Yr Egin



Digital and creative industry cluster at UWTSU in Carmarthen  
Industry worth over £90 million and 200 jobs in coming years  
3,700 square metre first phase officially opened in October, 2018  
First phase close to 100% occupation  
S4C HQ and many other creative/digital businesses  
Phase two design to start this autumn  
Phase two construction earmarked for 2022  
Fit-out, completion and occupation of phase two in 2023


NOLFAN  
C  
EGIN





# Digital Infrastructure





Regional, state-of-the-art digital infrastructure will be introduced as part of a £55 million project

The project will consist of three elements:

- Transport corridor
- Rural
- Connected City

Together these projects will:

- Create digital infrastructure including gigabit fibre and the establishment of 5G testbeds to enable innovation and entrepreneurship
- Expand the provision of 4G and Wi-Fi capabilities to benefit both urban and rural areas of the region
- Develop digital infrastructure for key sectors including energy, manufacturing and life sciences




## Project development

- Consultant appointed to develop business plan
- Dedicated project manager appointed
- Submission of project to Joint Committee for decision by the end of April, 2020

A man and a woman are looking at a computer monitor in a classroom or office setting. The man is leaning over the woman, and they both appear to be engaged in a collaborative activity. The background shows other people working at computers and a map on the wall.

Skills and Talent

A background image showing a person's hands working at a desk. A laptop is open, displaying a webpage. In the foreground, a white notebook is rolled up, with a pen resting on it. The notebook has some handwritten notes and a table with the heading 'CLASS'.

A regional £30 million project that will develop pathways that enable local people to access high-quality employment opportunities being created through City Deal projects

To identify skills and training needs, work will take place alongside:

- The private sector
- Schools
- The higher and further education sector
- Third sector training providers

Anticipated submission of business case to Joint Committee for decision by the end of April, 2020

# Questions

